



Magic Strap Toggle

CODE: CS14

Anchor clip


- Gravity flips automatically.
- Claws bite the plasterboard
- Rungs prevent clip from cutting into the plasterboard
- Easier to flip when installed on the wallboard and ceiling.
- Make the anchor clip and strap form a certain angle into the hole.

Double strap

- Locking ratchet
- Adjustable anchor length
- Easier installation

Plastic cap

- Easier to slide on strap
- Perfect fit the drilling hole
- Detachable

 **Patent-designed CAP** combined with the thickened strap offers a strength that surpasses the majority of similar products.

Slot

- Easy to assemble. The small teeth distributed above make the assembled plastic cap not easy to slide.

Ring handle

- Easy to pull

Features & Benefits

- Heavy Duty
- Fast and easy to install
- 1/2" hole
- Automatically adjusts to thickness of wall or ceiling
- Compared to other similar Toggles in the market, the price is lower
- Won't damage the plasterboard

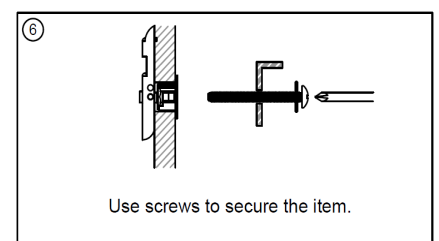
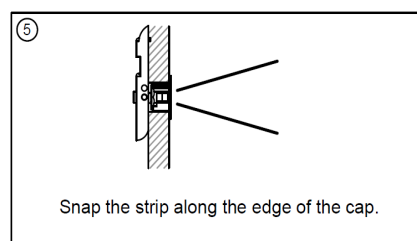
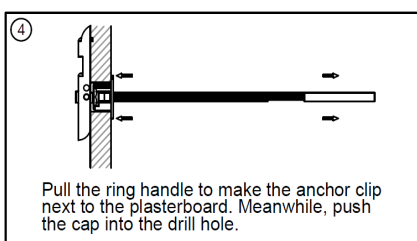
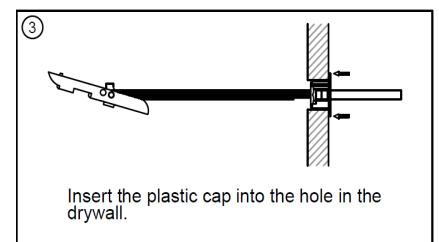
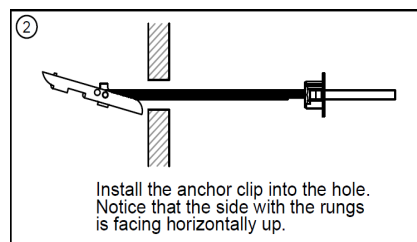
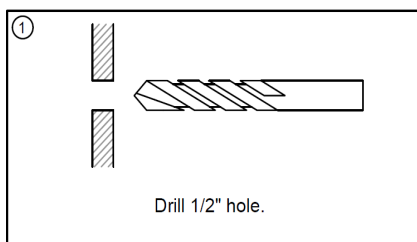
Length: 149mm

1/4" x 2-1/2"

Applications

- ▶ Kitchen wall cabinets
- ▶ Living room cabinets
- ▶ Shelving
- ▶ Wardrobes
- ▶ Handrails
- ▶ Pictures
- ▶ Mirror
- ▶ Lamps
- ▶ Heavy hanging baskets
- ▶ TV wall mount
- ▶ Air condition

Installation information:



For more information, Pls Email:

Chen Xiaojun: jmtmco@outlook.com

MS.Paney: hongly1@anchor.com.cn

MS.Grace: sales.d@fastening.com.cn

JMTM Specializes in Design

All products precision-crafted by

 **Suzhou Litto Fastener Co., Ltd.**