

Magic Expansion Drywall Anchor

CODE: EDAZ

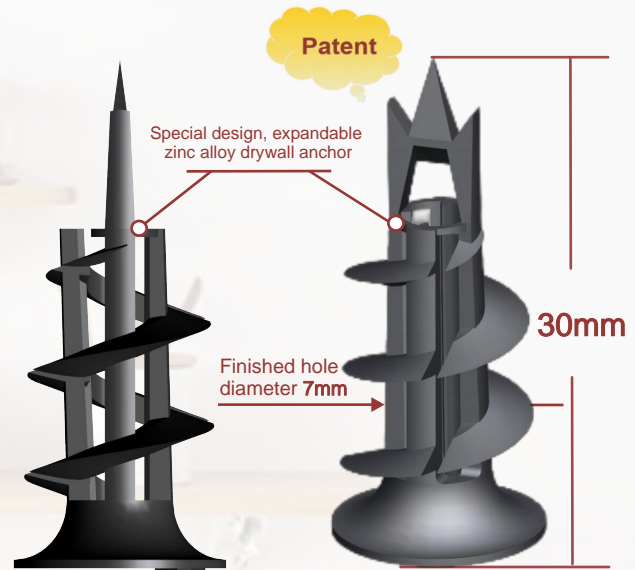
Product Details

Material	Zamak
Anchor Size	#8 x 30mm
Applicable Screw Diameter	#8

Product Performance

on 12mm plasterboard

Ultimate Tensile Strength	coming soon...
Shear Loading capacity within a 1mm displacement	coming soon...
Shear Loading capacity within a 2mm displacement	coming soon...
Shear Loading capacity within a 3mm displacement	coming soon...

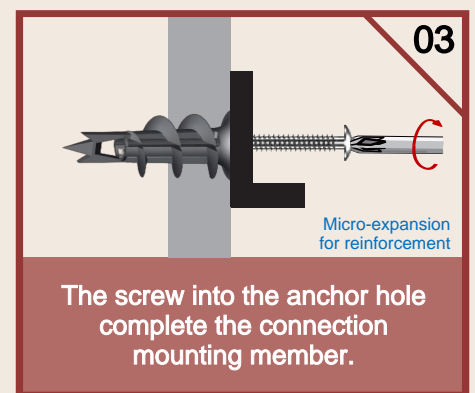
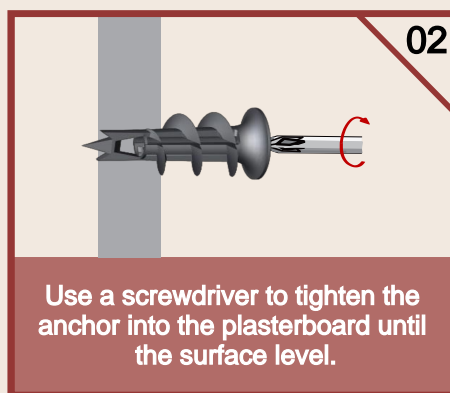
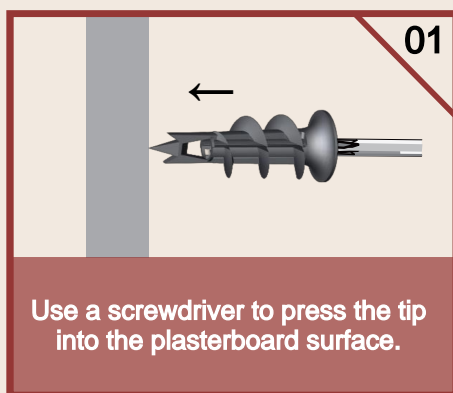


Suitable Substrate:

Plasterboard Fiber Cement Board

- ✓ Rock Wool
- ✓ PS Foam
- ✓ EPS Board
- ✓ Glass Wool
- ✓ XPS Board

Installation Steps



For more information, Pls Email:

Chen Xiaojun: jmtmco@outlook.com

Ms.Paney: hongly1@anchor.com.cn

Ms.Grace: sales.d@fastening.com.cn

JMTM Specializes in Design



All products precision-crafted by

Suzhou Litto Fastener Co., Ltd.