

## Product Details

|                           |           |
|---------------------------|-----------|
| Material                  | Nylon     |
| Anchor Size               | #6 x 34mm |
| Applicable Screw Diameter | #6        |

## Product Performance

on 12mm plasterboard

|  |                 |
|--|-----------------|
| Ultimate Tensile Strength                        | 215N (21.9 Kgs) |
| Shear Loading capacity within a 1mm displacement | 438N (44.7 Kgs) |
| Shear Loading capacity within a 2mm displacement | 616N (62.8 Kgs) |
| Shear Loading capacity within a 3mm displacement | 621N (63.3 Kgs) |

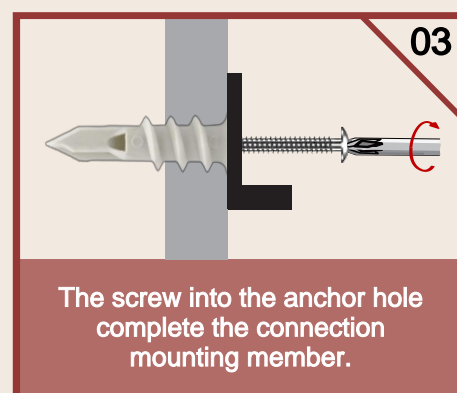
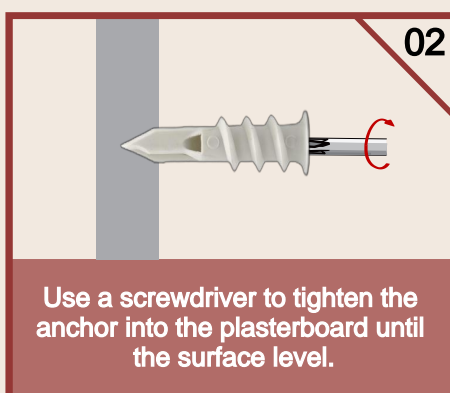
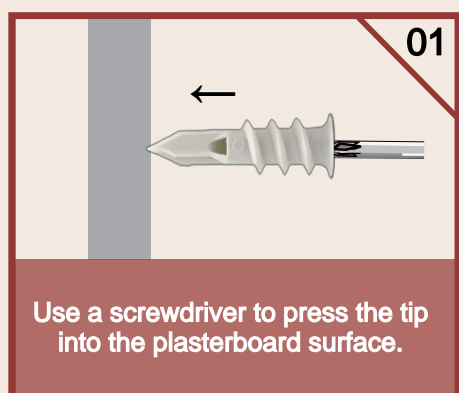


### Suitable Substrate:

#### Plasterboard

- ✓ Rock Wool
- ✓ PS Foam
- ✓ EPS Board
- ✓ Glass Wool
- ✓ XPS Board

## Installation Steps



For more information, Pls Email:

Chen Xiaojun: jmtmco@outlook.com

Ms.Paney: hongly1@anchor.com.cn

Ms.Grace: sales.d@fastening.com.cn



All products precision-crafted by

**Suzhou Litto Fastener Co., Ltd.**