

Magic Nylon Drywall Anchor

CODE: NDAN

Product Details	
Material	Nylon + carbon steel
Anchor Size	#8 x 46mm
Applicable Screw Diameter	#8

Product Performance on 12mm plasterboard	
Ultimate Tensile Strength	226N (23.0 Kgs)
Shear Loading capacity within a 1mm displacement	441N (45.0 Kgs)
Shear Loading capacity within a 2mm displacement	543N (55.4 Kgs)
Shear Loading capacity within a 3mm displacement	606N (61.8 Kgs)

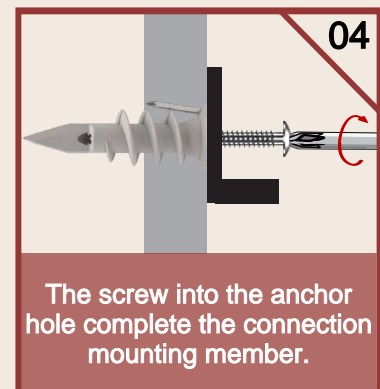
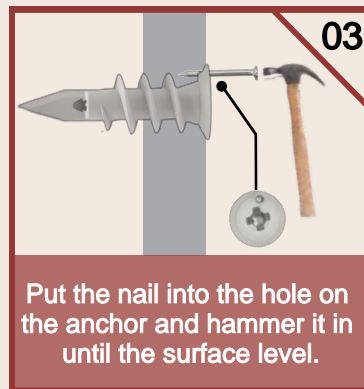
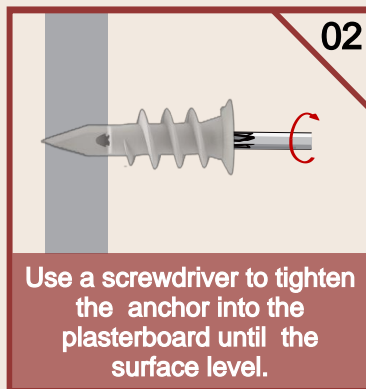
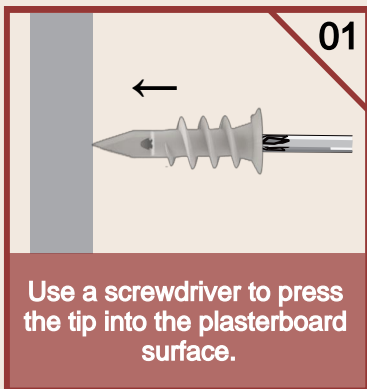


Suitable Substrate:

Plasterboard

- ✓ Rock Wool
- ✓ PS Foam
- ✓ EPS Board
- ✓ Glass Wool
- ✓ XPS Board

Installation Steps



For more information, Pls Email:

Chen Xiaojun: jmtmco@outlook.com

Ms.Paney: hongly1@anchor.com.cn

Ms.Grace: sales.d@fastening.com.cn

JMTM Specializes in Design



All products precision-crafted by

Suzhou Litto Fastener Co., Ltd.