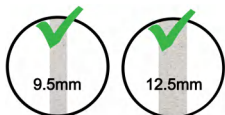
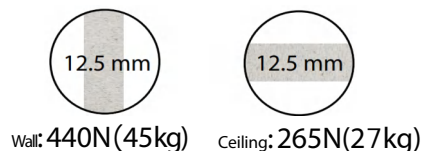


# Magic Self-drilling Toggle

CODE: ZSM4A



Applicable thickness of plasterboard:  
★9-13mm



- Cabinets
- Shelving
- Wardrobes
- Handrails
- Pictures
- Mirror
- Lamps
- Heavy hanging baskets

- Anti-loosening
- Anti-vibration
- Super Heavy-duty

No Pre-Drilling Required

Improved zinc-alloy part:  
locked with the nylon part;  
fixed length closed to 25mm  
with 2"(51mm) screw, which  
far beyond other similar  
products.

360°All-round direction freely  
lockable behind of plasterboard

Finished hole  
diameter 10mm

Ø 10 x 60mm

M4 x 51mm

**Patented screw** with shrunk  
rod and reversed thread: won't  
destroy the anchor and the  
gypsum; 0 failure.

Special design for the length of  
the smooth shank: ensure 100%  
success during installation.

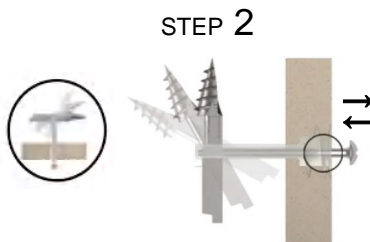
STEP 1



**tip:** Use a screwdriver to press the metal  
tip of the DRILLING TOGGLE into the  
gypsum board surface paper 1-1.5 mm.

With the help of modified special metal threaded  
point, the DRILLING TOGGLE is easily screwed  
into the gypsum board so that the white plastic  
head plane is flush with the gypsum board.  
Please use the lowest speed of the power screw-  
driver, otherwise it is easy to damage the plastic  
recess.

STEP 2

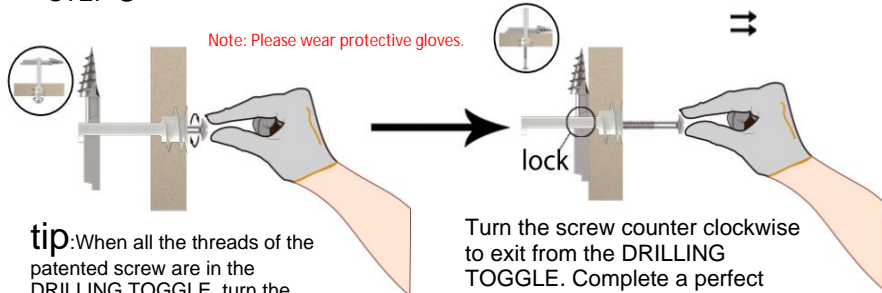


**tip:** Please push the special patented  
screw into the DRILLING TOGGLE.  
If necessary, push and pull repeatedly  
until the screw threads are all  
inside the DRILLING TOGGLE.

Specially designed screw threads give a clear signal whether the  
metal parts behind the gypsum board have been turned over and  
the screws have entered the internal threads. Such a design  
packaging installation 100% successful, zero risk of failure. There  
is no gnawing phenomenon, no damage to ANCHOR, and no  
damage to the gypsum board.

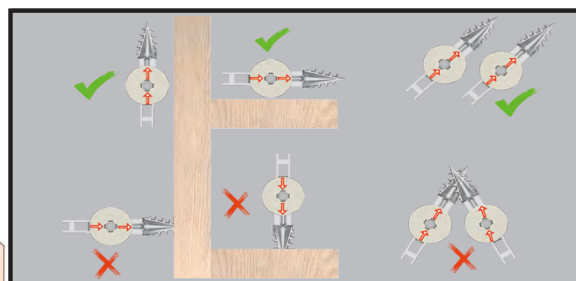
STEP 3

Note: Please wear protective gloves.



**tip:** When all the threads of the  
patented screw are in the  
DRILLING TOGGLE, turn the  
screw clockwise so that it catches  
the internal thread of the metal  
part behind the drywall and pulls  
it toward the drywall. As an  
additional design, the white  
plastic will lock the metal parts.

Turn the screw counter clockwise  
to exit from the DRILLING  
TOGGLE. Complete a perfect  
recommended installation.  
Screws of the same length can fix  
more range than its class.



The arrows on the ZSM4A's white head indicate the metal  
part's direction behind the gypsum board. Align the arrow  
parallel to the wood strip to avoid it. For closely positioned  
toggles, ensure arrows are parallel. Use hand screwdrivers  
for fine-tuning alignment.

**WARNING:** Avoid application on gypsum boards  
with existing insulation materials.

For more information, Pls Email:

Chen Xiaojun: jmtmco@outlook.com

Ms. Paney: hongly1@anchor.com.cn

Ms. Grace: sales.d@fastening.com.cn

JMTM Specializes in Design

All products precision-crafted by

 Suzhou Litto Fastener Co., Ltd.